

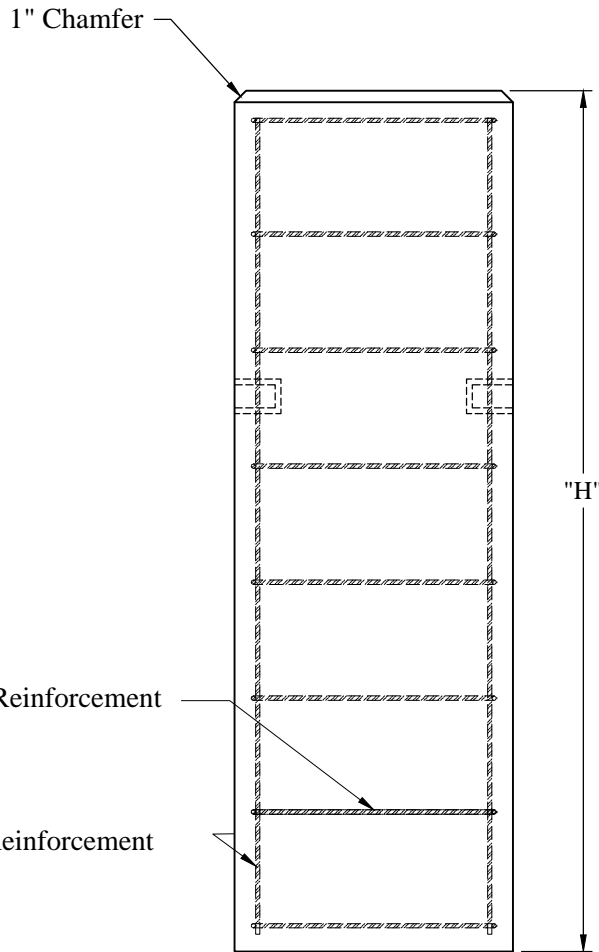
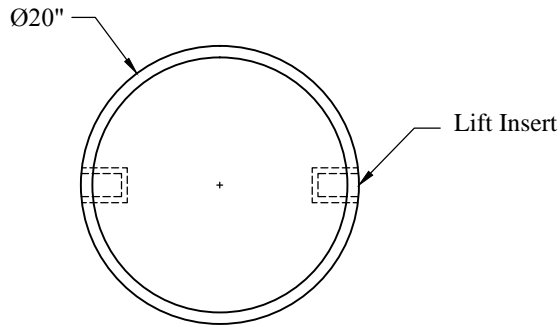
1-800-639-2199

Fax (603) 224-2927

Light Pole Bases\Piers\20 Inch Dia Piers (v)

Phoenix Precast Products

Phoenix Precast Products



Height	Weight	P/N:
3'-0"	960 lbs	PIER-20R3
3'-6"	1,120 lbs	PIER-20R3.5
4'-0"	1,280 lbs	PIER-20R4
4'-6"	1,440 lbs	PIER-20R4.5
5'-0"	1,600 lbs	PIER-20R5
5'-6"	1,760 lbs	PIER-20R5.5
6'-0"	1,920 lbs	PIER-20R6
6'-6"	2,080 lbs	PIER-20R6.5
7'-0"	2,240 lbs	PIER-20R7
7'-6"	2,400 lbs	PIER-20R7.5
8'-0"	2,560 lbs	PIER-20R8

General Notes

1. Concrete: $f_c = 4,000$ PSI @ 28 Days Minimum
2. Reinforcing Steel Conforms to Latest ASTM Specifications:
ASTM A615 Grade 60 Rebar Black Deformed Bars

Phoenix
Precast
Products

20" Diameter
Pier